



Tchoban Foundation
Museum für
Architekturzeichnung

Press release

Berlin, 02.05.2015

American Perspectives: from Classic to Contemporary

Tchoban Foundation. Museum for Architectural Drawing
Christinenstraße 18a, 10119 Berlin

Exhibition opening on the 19th June, 2015 at 19:00
Press conference on the 19th June, 2015 at 12:00

Duration: 20th June, 2015 – 20th September, 2015

Opening times: Mon.- Fri. 14:00-19:00, Sat.–Sun. 13:00-17:00
Tickets: 5 Euros, reductions: 3 Euros

The Tchoban Foundation Museum for Architectural Drawing's forthcoming exhibition is dedicated to the development of architectural representation in the United States of America in the 20th and 21st century.

The exhibition presents the hand-drawn worlds of prominent American architects and architectural draftsmen. The art of architectural representation in the USA, particularly at the beginning of the 20th century, reached heights of originality and perfection which still stand out today. The exhibition demonstrates the diversity of techniques used by leading architectural draftsmen, not only in the form of competition entries and drawings from realised projects but also as architectural fantasies.

On show will be works not only by such renowned architectural thinkers as Frank Lloyd Wright (1867–1959) from his creative periods around 1910 and the 1950s, Richard Neutra (1892–1970) and Lebbeus Woods (1940–2012); but also masterworks by professional architectural draftsmen, particularly Hugh Ferriss (1889–1962), now celebrated far beyond the borders of the USA and Achilles Rizzoli (1896–1981), virtually unknown until the 1990s, his groundbreaking fantasies from the 1930s were only discovered after his death.

The exhibition shows the influence which drawing style can have on formulating architectonic ideas and demonstrates the role which artistic expression plays on architectural presentation.

It is thus possible to recognise the connections between Hugh Ferriss's fantasies, the cityscapes of New York and the commissioned work which he produced as a much sought-after draftsman for other architects. It is exciting to observe how the instantly recognisable drawing style which he developed in his high-rise fantasies - particularly well-known from the book, *The Metropolis of Tomorrow* published in 1929 - can be rediscovered in the commissioned works.

In contrast, the influence of Japanese architecture as well as Japanese coloured wood-cut prints can be seen in Frank Lloyd Wright's early pen and ink drawings. These not only influenced his style of rendering but also nourished his architectural designs.

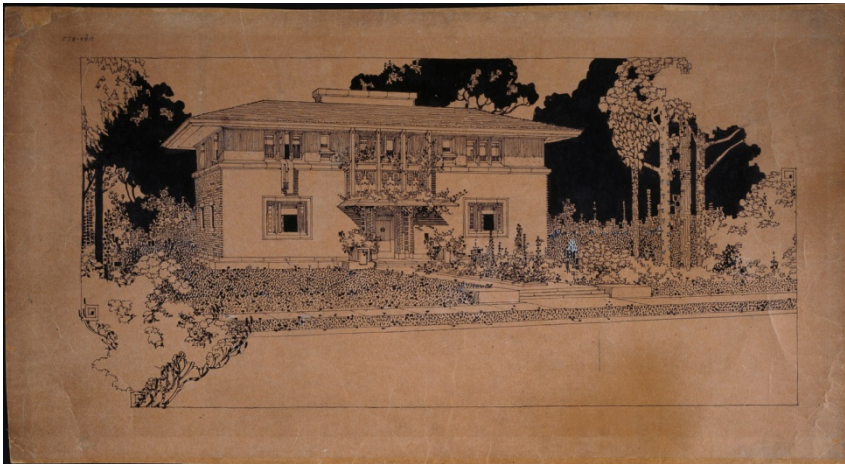
One can also see how the never-ending lines of Lebbeus Woods's drafting style are carried over into his construction forms.

Architectural illustration has been particularly recognised from the 1980s to the present day in the United States: in the second half of the 1980s, leading architectural draftsmen founded the American Society of Architectural Perspectivists (today the American Society of Architectural Illustrators ASAI). This unique international organisation unites not only leading practitioners from the USA but is also open to foreign members. The society runs the annual Hugh Ferriss Memorial Prize for Architectural Drawing which is concluded with an exhibition of the best submitted works from the USA and the rest of the world. These entries were shown in Europe for the first time in 1994 in the AEDS gallery at Savigny Platz, Berlin. Today, the Tchoban Foundation presents exceptional works by contemporary architectural draftsmen, including Hugh Ferriss prize winners, Thomas Schaller, Paul Stevenson Oles and Gilbert Gorski. Also on view are works by Richard Ferrier, Steven Quevedo, James Wines, Scott Tulay, Gary Schuberth and Michael Sorkin, similarly renowned for their unmistakable drawing styles in the USA and beyond.

The exhibited works stem from private collections or are on loan from the artists themselves.

Exhibition Idea and Concept

Sergei Tchoban, initiator of the foundation carrying his own name and the Museum for Architectural Drawing, is a member of the American Society of Architectural Illustrators ASAI. His architectural drawings have been distinguished by many international prizes. Alongside his drawing, Sergei Tchoban is a practicing architect with offices in Berlin and Moscow.



Clockwise from top left:

Thomas W Schaller. From the City. 1990. Watercolour, 670x450mm
© Thomas W Schaller

Scott Tulay. Coal firing. 2009. Charcoal, pastel, graphite, ink on illustration board, 710x960 mm
© Scott Tulay

Frank Lloyd Wright. Residence at Oak Park, Illinois. 1907. Plume, ink on paper, 306x570 mm
© VG Bild-Kunst, Bonn 2015

Contact

Tchoban Foundation. Museum for Architectural Drawing
Christinenstraße 18a, 10119 Berlin

Tel.: + 49 30 437 390 90

Fax: +49 30 437 390 92

Email: mail@tchoban-foundation.de

Internet: www.tchoban-foundation.de

We kindly request a copy in the case of publishing